

# Component Replacement

- electrical -



*Xperia™ E-Dual C1605, C1604*  
*Xperia™ E C1505, C1504*

**CONTENTS**

1 Replaceable Components ..... 3

2 Component Placing..... 5

3 Additional Repair info ..... 6

4 Revision History ..... 9

*For general information about electrical repair related issues, refer to 1220-1336: Generic Repair Manual - electrical*

*Test after electrical replacement: refer to 1273-1772 Mechanical Test Instruction*

*Do not remove shield can lids (Heat pasta are added and RF performance will be damaged)*

# 1 Replaceable Components

## EXPLANATION OF ABBREVIATIONS USED IN THE COLUMN 'COMMENTS' BELOW

### **COMPONENT LOCATION**

**P** = Primary side

**S** = Secondary side

### **REPAIR METHOD**

**HA** = Hot Air (removal & mounting)

**ST** = Soldering Tool (removal & mounting)

**HA/ST** = Hot Air for removal - Soldering Tool for mounting

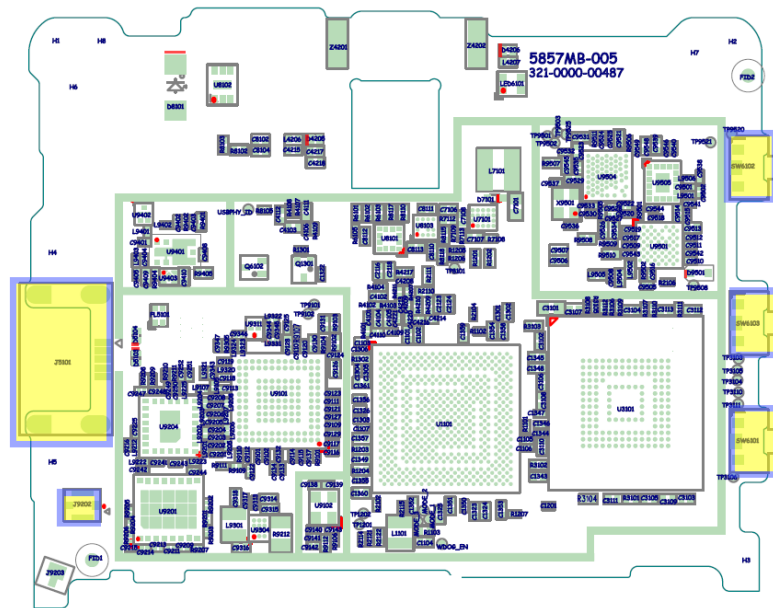
**BGA** = BGA Station

**BH** = Bottom Heater

### **ADDITIONAL INFORMATION**

⇒1 (2,3,4, etc.) = Proceed to 'Additional Repair Info' for further instructions in the indicated section(s).

Position	Component	Part no.	Comments
J4203	Vibrator	A/320-0000-00073	S HA+BH ⇨1
J4204	EAR PHONE JACK	A/314-0000-00752	S HA/ST+BH ⇨2
J5101	Micro USB connector	A/314-0000-00657	P HA/ST+BH or BGA ⇨3
J5103	Battery connector	A/314-0000-00758	S HA+BH or BGA ⇨4
J5104	Micro SD Card Connector	A/314-0000-00484	S HA+BH or BGA ⇨5
J9201	Connector Coax Receptacle 1p test switch	A/314-0000-00282	S HA+BH ⇨6
J9202	GSM Coaxial Connector	A/314-0000-00806	P HA+BH ⇨7
J9501	Connector Coax Receptacle 1p test switch	A/314-0000-00282	S HA+BH ⇨8
MIC4101	MIC	A/312-0000-00052	S HA+BH or BGA ⇨9
SW6101	Side Key Switch	A/315-0000-00047	P HA/ST+BH ⇨10
SW6102	Side Key Switch	A/315-0000-00047	P HA/ST+BH ⇨10
SW6103	Side Key Switch	A/315-0000-00047	P HA/ST+BH ⇨10
Z9401	ANTENNA Connector	A/314-0000-00840	S HA+BH ⇨11
Z9402	ANTENNA Connector	A/314-0000-00840	S HA+BH ⇨11
Z9501	ANTENNA Connector	A/314-0000-00840	S HA+BH ⇨12
Z9502	ANTENNA Connector	A/314-0000-00840	S HA+BH ⇨12



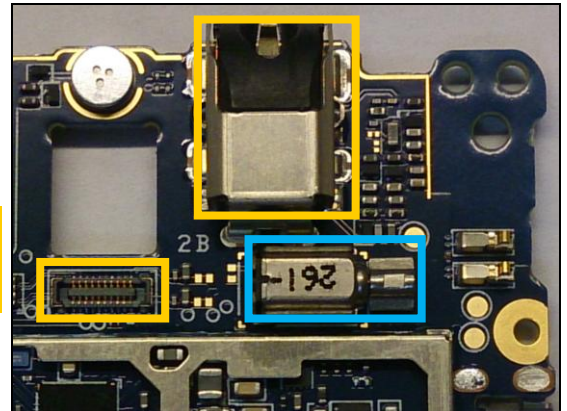
5(9)

### 3 Additional Repair info

1

J4203

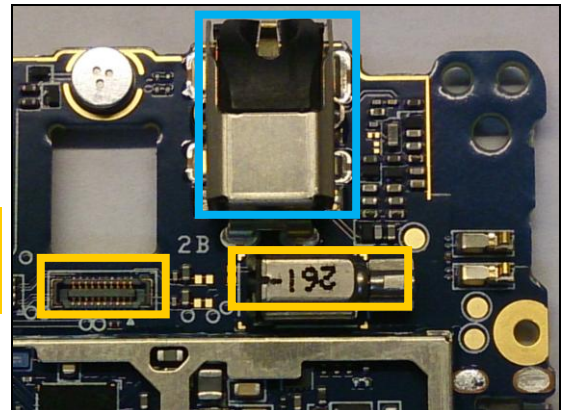
**Replace if Vibrator not working**  
**Protect the Audio jack and BtB connectors with capton tape!**



2

J4204

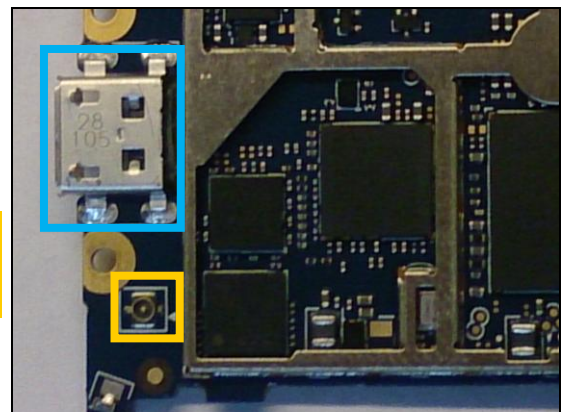
**Replace if no audio from headset.**  
**Protect the Vibrator and BtB connector with capton tape!**



3

J5101

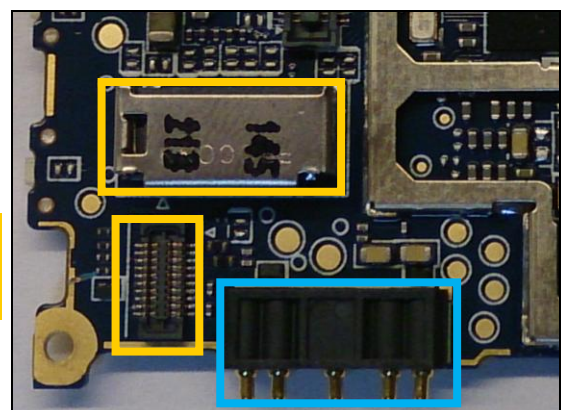
**Replace if mechanical damaged (USB charger or data transfer not working)**  
**Protect the RF connector with capton tape!**



4

J5103

**Replace if mechanical damaged. (Phone dead or power off)**  
**Protect the BtB and SD connectors with capton tape!**



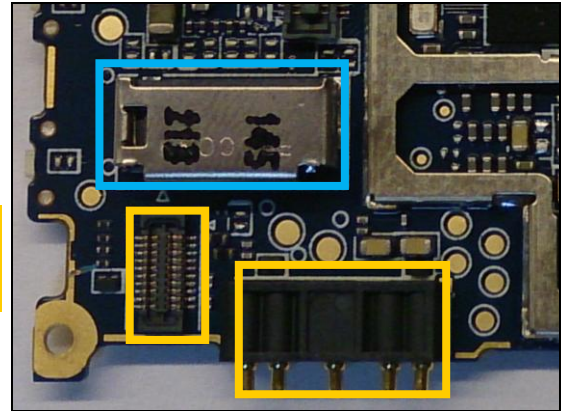


## Repair Actions: Additional Repair Info

**5**

**J5104**

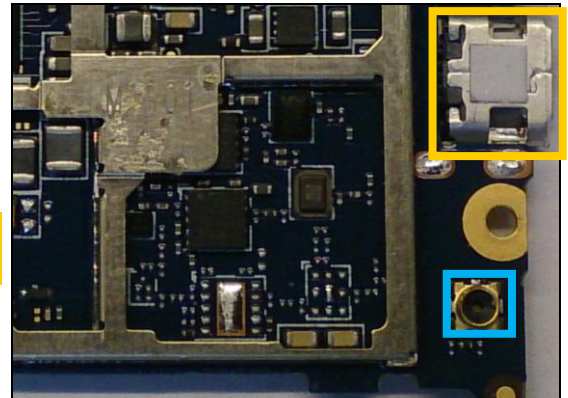
**Replace if mechanical damaged (No SD card inserted)**  
**Protect the BtB and Battery connectors with capton tape!**



**6**

**J9201**

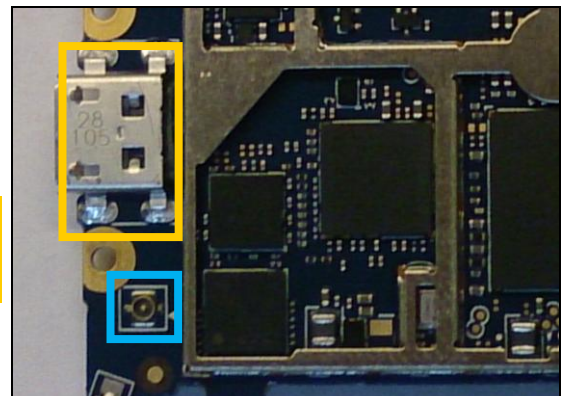
**Replace if open circuit 1-2 (Bad network, main antenna)**  
**Protect the USB connectors with capton tape!**



**7**

**J9202**

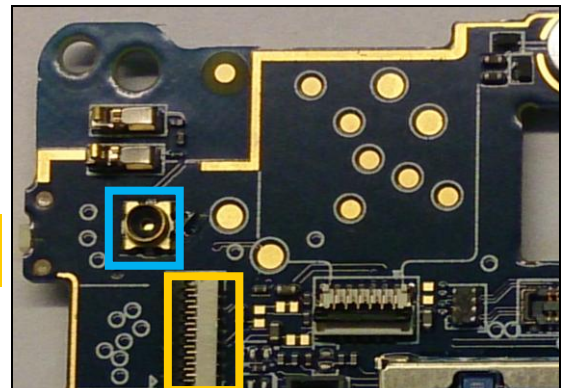
**Replace if mechanical damaged (Bad network, main antenna)**  
**Protect the USB connectors with capton tape!**



**8**

**J9501**

**Replace if open circuit 1-2 (No or Bad WLAN)**  
**Protect the BtB connector with capton tape!**

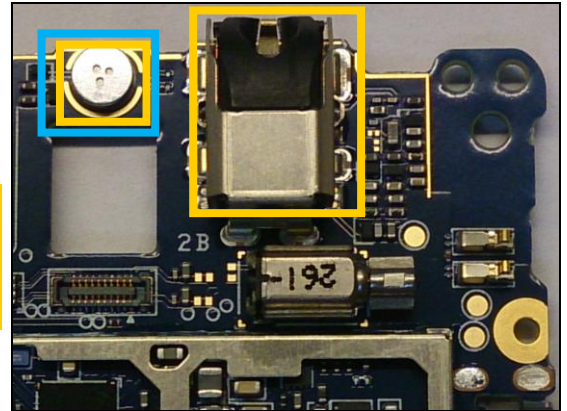


## Repair Actions: Additional Repair Info

9

MIC4101

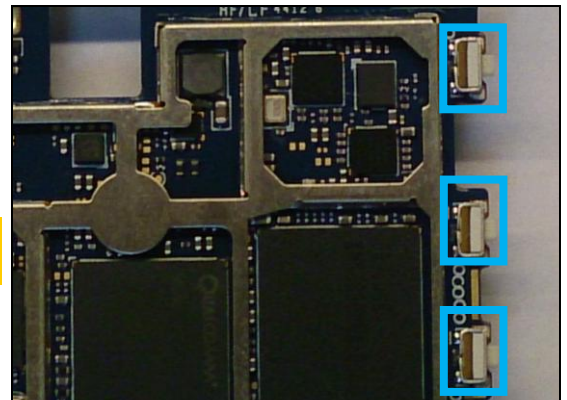
**Replace if no audio from secondary mic**  
**When replacing protect secondary mic with capton tape!**  
**Protect the Audio jack connector with capton tape!**



10

SW6101, SW6102, SW6103

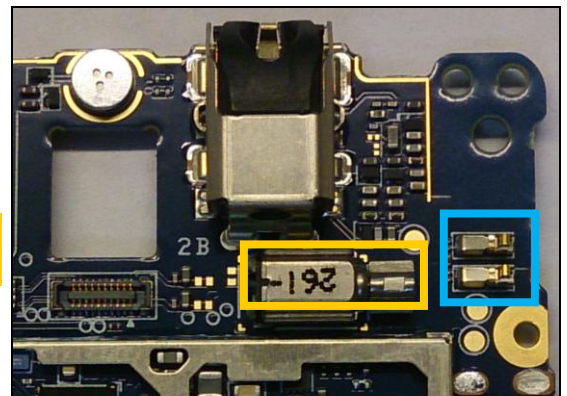
**Replace if mechanical damaged. (Power key or volume key up/down problems)**



11

Z9401, Z9402

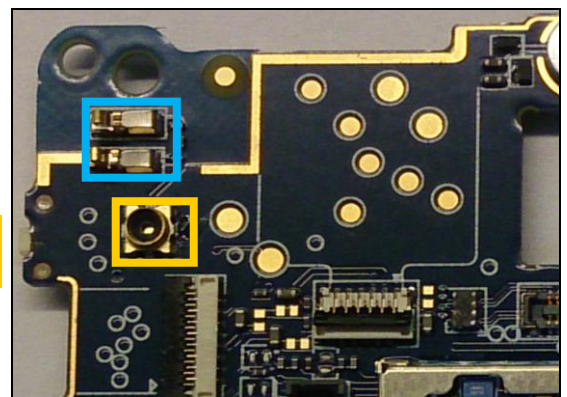
**Replace if mechanical damaged. (No or bad GPS)**  
**Protect the vibrator with capton tape!**



12

Z9501, Z9502

**Replace if mechanical damaged. (No or bad WLAN)**  
**Protect the RF connector with capton tape!**





## 4 Revision History

Rev.	Date	Changes / Comments
1	2014-07-03	Initial release